



*Coloratti*  
© Eric Meola

### Product Line Comparison

- i1Basic
- i1XTreme
- ColorMunki Photo
- ColorMunki Design





**ColorMunki™ Photo** is a **color control solution** for accurate display-to-print match, with additional color creation and communication tools included. *Ideal for wedding, portrait and event photographers – or anyone passionate about the quality of their images.*

ColorMunki Photo was developed with the input of professional photographers as a versatile, helpful, and reliable solution that enables photographers to easily, quickly, and affordably match colors from display to print. This all-in-one do everything, go everywhere solution combines power and simplicity to bring photos from screen to print accurately, simply, and affordably.

ColorMunki Photo includes display, projector and printer profiling tools, plus DigitalPouch™ Image Transport and Photo ColorPicker.



**ColorMunki™ Design** is a **color inspiration and creation solution**, with additional color control tools included. *Ideal for agencies, corporate in-house and freelance designers*

ColorMunki™ Design was developed with the input of professional designers as a professional grade color palette creation solution for specification, verification and sharing of colors, plus color control for displays and printers. This all-in-one do everything solution combines power and simplicity, giving designers ultimate color freedom and control for all their inspirational work.

ColorMunki Design delivers robust color palette creation, plus display, projector and printer profiling tools.



**i1PRO solutions** are ideal for **high end color production environments** such as prepress, proofing and fine art printing. i1PRO has long been the de facto industry standard when it comes to consistent, high quality color management. It offers super fast measurements, great patch recognition, and versatility! i1Pro solutions are built with workflow in mind and it is easy to upgrade your i1 package to suit your needs over time. i1PRO is speed-optimized and outfitted with an easy-to-use ruler and backup board, creating a smooth, gliding action for reading patches fluidly and effortlessly. You can also add automation anytime with i1iO. Together with the included i1Match software and the i1Defined interactive training CD, users are ensured a seamless, positive out-of-box experience.

**i1Basic** is an affordable, professional spectral color measurement solution – scan spectral color, obtain accurate color on displays, utilize device to linearize printers, and easily upgradeable.

**i1XTreme** puts complete color control at your fingertips – the one system comprehensive enough to be the only color management solution you will ever need to obtain accurate color on all your devices.

#### Key i1 Differentiators to ColorMunki solutions:

- i1Pro printer profiles are based on measurements from high count/small patch test charts. ColorMunki utilizes a two test chart, 50 patches each approach. Frequent chart measurement or high quantity patch requirement for more refined printer profiles are best handled by i1Pro solutions.
- i1Pro solutions provide the ability to add functionality, including automation. ColorMunki solutions do not offer functional upgrades.
- i1Pro solutions offers open seat licensing. ColorMunki offers limited multiple seat licensing (Educational Institutions and Camera Clubs receive extended open seat license upon registration of ColorMunki.).
- i1Pro solutions available in fixed UV Cut or fixed non-UV Cut filters. ColorMunki offers only UV Cut filter.
- i1Pro solutions offer scanner profiling, digital camera profiling, profile editing and automation. ColorMunki does not offer these features.

# PRODUCT FEATURES



● INCLUDED  
○ OPTIONAL

	i1Basic	i1XTreme	ColorMunki Photo	ColorMunki Design	
All-in-One Spectrophotometer	●	●	●	●	No separate devices needed to do monitor and printer profiling.
Display Profiling	●	●	●	●	i1Pro solutions profile LCD, CRT & Laptops. ColorMunki solutions profile LCD & Laptops.
Digital Projector Profiling	○	●	●	●	Professional i1Beamer holder included in i1XTreme for virtually hands-free use.
Scanner Profiling	○	●			i1Pro solutions include i1Scan Target - when measured with i1Pro provides highly accurate scanner reference values for best scanner profiles. ColorMunki solutions do not include scanner profiling functionality.
Digital Camera Profiling	○	●			i1Pro solutions support the industry standard Digital ColorChecker SG chart (sold separately). ColorMunki solutions do not include digital camera profiling functionality.
RGB & CMYK Printer Profiling	○	●	●	●	i1XTreme includes industry standard hi-count CMYK/RGB patch targets support for prepress, hi-end commercial photography and fine art reproduction. ColorMunki solutions are based on sophisticated profiling technology of scanning two charts with 50 patches each.
Profile Editor	○	●			i1Pro Solutions provide user controllable editing functionality. ColorMunki solutions do not offer profile editing functionality.
Profile Optimization			●	●	ColorMunki Photo allows for printer profile optimization based on specific images. ColorMunki Design allows for printer profile optimization based on spot color(s). Profiles created with i1 solutions are based on high patch count testcharts for highest quality.
Palette Creation Tools					Color creation tools add a new level of creativity for the creative professional. i1Pro solutions utilize i1Share. ColorMunki solutions utilize incorporated color palette creation software.
<ul style="list-style-type: none"> <li>• Auto extract color from images</li> <li>• Auto sync palettes with Photoshop®, InDesign and QuarkXPress®</li> <li>• Create/export custom color palettes</li> <li>• Preview colors for PrintSafe™ production</li> <li>• Preview colors under different light sources</li> </ul>	●	●	●	●	
Digital Pouch™ - ViewSafe™ transport			●		Put your images in the DigitalPouch™ and confidently transport them to your client. This self-extracting file includes your embedded profile and checks for an accurate, up-to-date monitor profile on receiver side, ensuring a ViewSafe™ environment.
Spot Color Measurement	●	●	●	●	Both i1Pro and ColorMunki solutions have the unique ability to capture pure spectral color from just about any surface. Easily import into palette creation software for use in image editing.
Ambient Measurement	●	●	●	●	i1Pro Solutions captures ambient light for evaluation of viewing conditions and application to profile. ColorMunki Solutions quickly captures and applies ambient light measurement to the monitor profile.
Flash Measurement	●	●			i1 Solutions captures full spectral data of flash measurement.
Ruler/Backup Board	●	●			i1Pro solutions are outfitted with an easy-to-use ruler and backup board. Taking full advantage of the speed optimized i1Pro device, this creates a smooth, gliding action for reading high count patches fluidly and effortlessly. The i1Pro backup board also ensures consistent white backing, especially important for thinner stock papers. ColorMunki solutions have built in teflon strips for easy scanning without a ruler.

## ACCESSORIES



● INCLUDED  
○ OPTIONAL

	i1Basic	i1XTreme	ColorMunki Photo	ColorMunki Design	
i1iO Automatic Scan Table	○	○			Easily add profiling automation to your i1Pro solution and still maintain all the versatile functionality of your i1Pro device.
i1Beamer Holder	○	○			i1Beamer holder adds convenience to projector profile creation - no need to manually hold the i1Pro device.
Monitor Holder	●	○	○	○	i1Pro solutions offers separate monitor holder. ColorMunki offers a unique protective neoprene bag that also acts as an integrated monitor holder.
PANTONE® Libraries	●	○	○	○	i1Pro solutions include PANTONE MATCHING SYSTEM® Libraries. ColorMunki solutions include PANTONE Goe™ Libraries. PANTONE MATCHING SYSTEM Libraries are also provided upon product registration.
Interactive Color Management Training Videos	●	○	○ <small>(shipping September 2008)</small>	○ <small>(shipping September 2008)</small>	Up-to-date interactive training videos show use of device and software as well as how to work effectively in a color managed workflow.
Personal Color Trainer (PCT) Session	○	○	○	○	i1Pro solutions are complemented with an optional one hour remote training session with an X-Rite Color Services expert to get you the perfect individualized "Getting Started Training."
ColorChecker Cards	○	○			Digital Camera module in i1Pro solutions supports the industry standard Digital ColorChecker SG chart. ColorMunki Photo does not offer Digital Camera Profiling.
Vouchers	●	○			i1Basic: 50% off any i1Match module. i1XTreme: \$400 towards purchase of ProfileMaker or PROFILER solutions.

## HARDWARE FEATURES

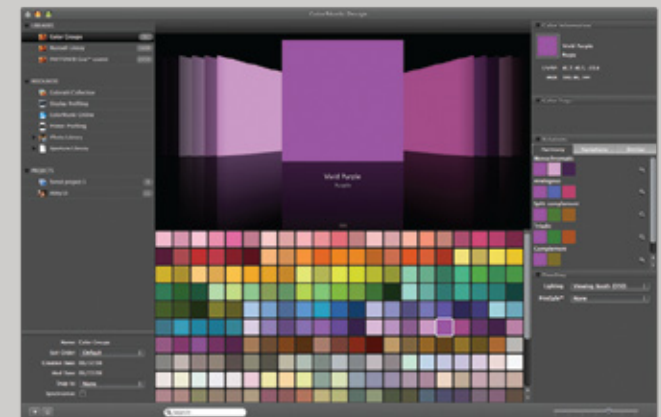
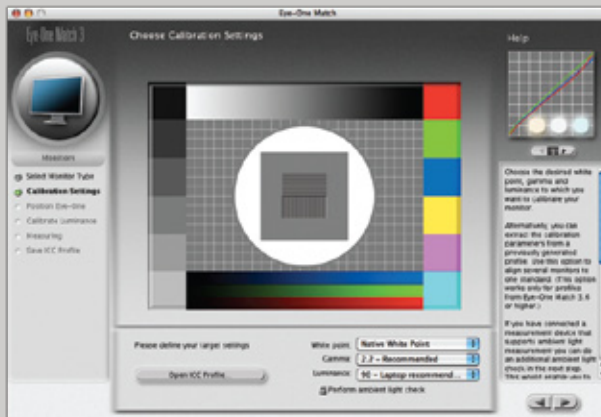
Strip Measurement Mode	●	○	○	○	Semi-automated scanning mode makes scanning test chart fast and easy.
Built In Calibration Tile			○	○	ColorMunki integrates white calibration tile directly inside device.
3.5nm physical sampling interval and 10nm optical resolution	●	○	○	○	i1Pro solutions and ColorMunki solutions feature very high resolution due to 3.5nm physical sampling interval and 10nm optical resolution, capturing more detail on paper and provides precise monitor and other emissive measurements such as ambient and digital projectors.
Emissive & Reflective Measurements in 1 Device	●	○	○	○	i1Pro and ColorMunki solutions: One device does it all!
Choice of UV Filter or No Filter	●	○			i1Pro solutions available in either fixed UV Filter or fixed No Filter. ColorMunki solutions available in fixed UV Cut Filter only.
Instrument Embedded Software Key (dongle)	●	○	○	○	Software functionality coded directly into the i1Pro or ColorMunki device. i1Pro solutions can be individually upgraded with keys for additional function modules.

# SOFTWARE FEATURES



● INCLUDED  
○ OPTIONAL

	i1Basic	i1XTreme	ColorMunki Photo	ColorMunki Design	
Wizard guided interface	●	○	●	○	Wizard interface walks user through every step of the process with fully integrated help functionality. No user manuals needed.
Easy & Advanced Modes	●	○	●	○	i1Pro and ColorMunki solutions provides maximum flexibility for monitor profiling - easy mode requires minimal user interaction while advanced mode grants additional access to individual settings and features while maintaining greater ease of use.
Dynamic On-Screen Help	●	○	●	○	i1Pro includes illustrated, context appropriate and fully integrated help system; ColorMunki solutions provides QuickTime video help in addition to illustrated, context appropriate on screen help.
CxF Support	●	○	●	○	X-Rite's Color Exchange Format (CxF) enables you to communicate via mail and between applications.
Multiple Language Support	●	○	●	○	i1Pro and ColorMunki solutions provides 7 and 8 languages respectively throughout the entire solution in the graphical user interface, help, documentation, etc.
"OS X, Windows XP, Vista"	●	○	●	○	i1Pro and ColorMunki solutions support the latest industry operating systems on both Mac and PC platforms.



# MONITOR FEATURES



● INCLUDED  
○ OPTIONAL

	i1Basic	i1XTreme	ColorMunki Photo	ColorMunki Design	
DDC Control	●	○	●	○	i1Pro solutions supports DDC control for automated monitor profiling. i1Pro supports most industry leading displays. Complete list on <a href="http://xrite.com">xrite.com</a> . ColorMunki solutions offer auto detect DDC control. The software will quickly determine if a monitor is compliant and if so, perform all advanced calibrations automatically.
Native Whitepoint Target	●	○	●	○	Designed for users who do not wish to have i1Pro or ColorMunki software adjust the whitepoint of their display.
Custom Whitepoint	●	○	●	○	i1Pro does support true custom or user defined whitepoint. ColorMunki only allows for user selection of pre-defined whitepoints.
Device Assisted White Point Calibration	●	○			i1Pro device supported calibration of white point, brightness and contrast allows user to fully optimize hardware. Software provides direct feedback for optimum settings.
White Point Preview	●	○			Allows user to preview the color temperature of each whitepoint before they actually commit and build a profile.
Gamma Targeting	●	○			Provides greater workflow flexibility by offering wide range of preset available gamma values.
RGB Adjustment	●	○			Allows the user to fine tune the white point of their display hardware using measurement assisted controls for greater color accuracy.
Multiple Monitor Profiling	●	○	●	○	Profile any number of monitors hooked up to your operating system.
Workgroup Monitor Matching	●	○			Match several monitors in a workgroup environment by designating any previously generated i1 monitor profile as the reference profile and match gamma, whitepoint and luminance settings.
Ambient Color Temperature Measurement	●	○			Measure your ambient color temperature and set as your target whitepoint to achieve better screen to print matching in some workflows.
Post Calibration Reporting: Before & After Visual	●	○	●	○	Quickly see the results of the new profile created.
Post Calibration Reporting: Trending	●	○			Easily track and trend the performance of your monitor.
Custom Calibration Reminder	●	○	●	○	Set your system to automatically remind you to reprofile your monitor at 1, 2, 3 or 4 week intervals.



# PRINTER PROFILING FEATURES



● INCLUDED  
○ OPTIONAL

	i1Basic	i1XTreme	ColorMunki Photo	ColorMunki Design	
Image based profile optimization i.e. flesh tones, B&W, specific colors.			●		Offers unique ability to optimize profile based on image characterizations. Profiles created with i1 solutions are based on high patch count testcharts for highest quality.
Spot color based profile optimization				●	Offers unique ability to optimize profile based on spot color(s). Profiles created with i1 solutions are based on high patch count testcharts for highest quality
Auto detection of printers	●*	●	●	●	i1Pro and ColorMunki solutions automatically detects local and network printers.
AppSet™ Auto Printer Profile Setting			●	●	ColorMunki solutions automatically sets your printer profile as default in Photoshop®, InDesign® and QuarkXPress®
Print Target from Profiling Application	●*	●	●	●	Easily print your profiling target without leaving i1Pro or ColorMunki applications.
Predefined CMYK separation settings	●*	●			Choice of different (predefined) separation settings allows user to create CMYK profiles with optimal settings for various printing technologies.
Import/Export Measured Data	●*	●			Allows user to import/export measurement data for future profile usage and analysis in other programs.

\*when printer module activated

# REPUTATION, RELIABILITY, TRAINING & SUPPORT

High Track Record	●	●			i1Pro, the premier color solution for 8 years, has become an industry defacto standard for professional photographers, proofers and prepress professionals delivering accurate and reliable color results.
Large installed user base	●	●			More than 150,000 i1Pro units installed.
OEM and VARS for i1 systems	●	●			i1Pro is supported by all major RIP manufacturers for calibration of ink jet and color copier systems. It is also supported by all major profiling and process control software manufacturers.
Unlimited e-mail and phone support	●	●	●	●	X-Rite provides unlimited global support of all solutions

## Technical Differentiators

	i1Pro	ColorMunki	i1Pro advantages
illumination:	bulb	LED	
mode:	ring	unidirectional	Accuracy: Angle independency
spectrum:	UV-cut or no filter	UV-cut only	Accuracy & Versatility
illumination spot size:	3.5mm	8mm	
measurement aperture:	4.5mm	6mm	Versatility
frequency in scan rate:	200Hz	50Hz	Accuracy
spectral reporting:	10nm	10nm	
patch size, scan mode:	10mm x 10mm	20mm x 30mm	Productivity & Process Control & Versatility
automation:	iO	no	Productivity, Versatility
inter-instrument agreement on BCRA's:	0.4 $\Delta E$ avg	0.6 $\Delta E$ avg	Accuracy



### X-RITE WORLD HEADQUARTERS

Grand Rapids, Michigan USA • (800) 248-9748 • +1 616 803 2100 • xrite.com  
 All trademarks are the property of their respective owners. © 2007, X-Rite, Incorporated. All rights reserved.